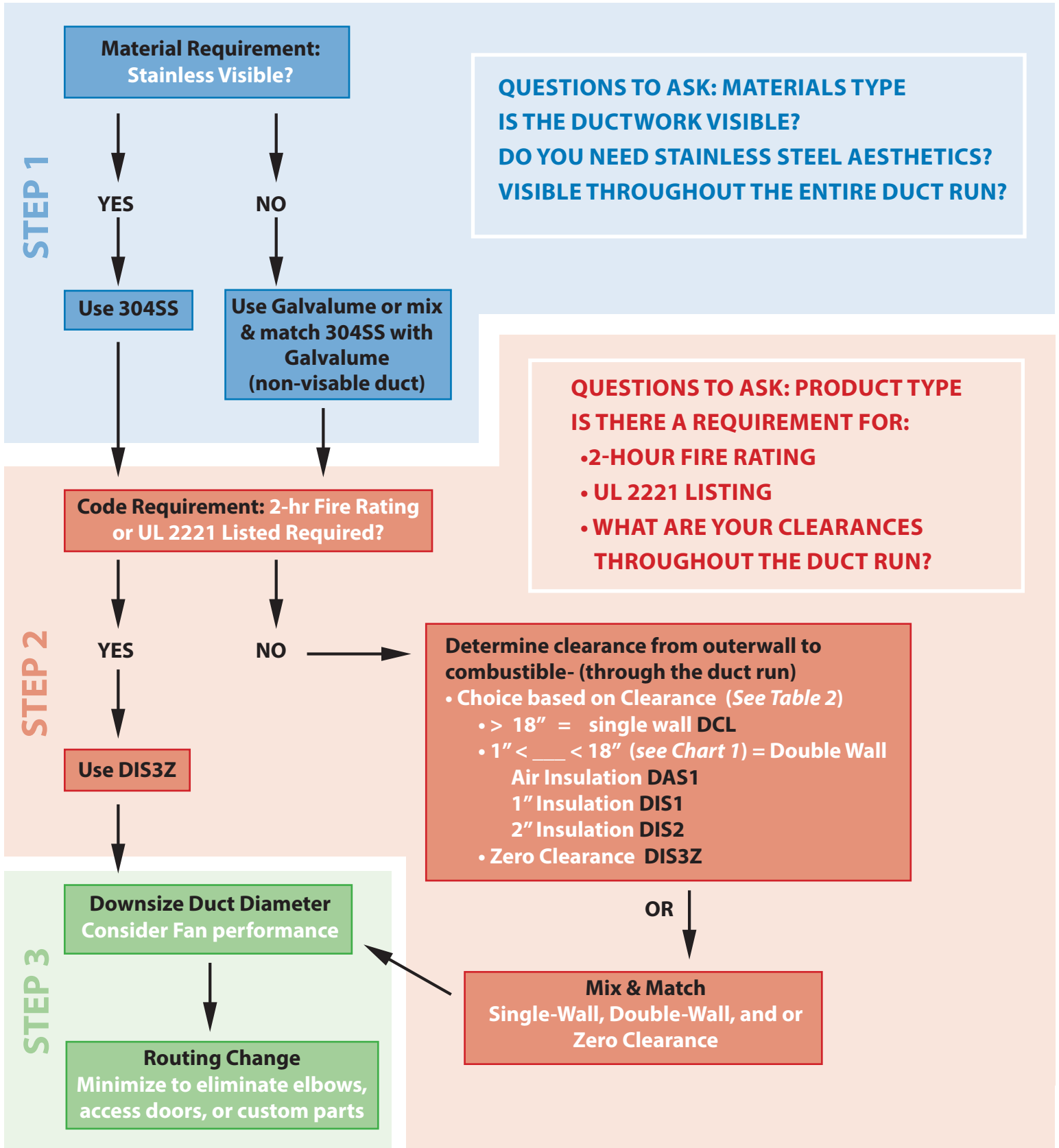


Finding the Right Product for your Application, at the Lowest Cost



Reference Tools:

CHART 1

How to Design Build - Choices based on Design Requirements		
Customer Needs	Design Requirement	Choice(s)
Code	UL 2221 - (2-hr Fire Rating)	Zero Clearance
	Not UL 2221 (UL 1978)	Double Wall or Single Wall
Aesthetics	Speced Stainless	304/304
	No Stainless Spec	
	Stainless Aesthetics (visible/modern)	304/304
Clearance to Combustibles	No Aesthetic Requirement	Galvalume
	≥ 18"	Single Wall
	≥ 1" and ≤18"	Double Wall - UL 1978
	0"	Zero Clearance - UL 2221

Lower Costs - Options			
	Less Expensive \$	← →	More Expensive \$\$\$
Materials (1)	Galvalume	304 Stainless	316 Stainless
Product Type (1)	Single Wall	Double Wall	Zero Clearance
Diameter**	Smaller Diameter		Larger Diameter
	**Increase fan speed or size		

Note (1) - Can you mix & match Materials and or Product Type?

For Reference: Product Options based on Clearance to Combustibles.

TABLE 2 - Clearance to Combustible (Unenclosed Surrounding)
(from the outer band)
Grease Duct - UL 1978 (500°F)

x	DCL	DAS1	DIS1	DIS2 & DIS4	DIS3Z
5	18	4	2	1	0
6	18	5	2	1	0
7	18	5	2	1	0
8	18	5	2	1	0
9	18	5	2	1	0
10	18	5	2	1	0
11	18	5	2	1	0
12	18	6	2	1	0
13	18	6	2	1	0
14	18	6	2	1	0
16	18	6	3	1	0
18	18	7	3	2	0
20	18	7	3	2	0
22	18	7	3	2	0
24	18	8	3	2	0
26	18	8	4	2	0
28	18	8	4	2	0
30	18	9	4	2	0
32	18	9	4	3	0
34	18	9	4	3	0
36	18	10	5	3	0

Dimensions are in inches

Note: Clearance to non combustible is 0" for all models and diameter

TIPS:

- 1-No square hood connection
- 2-Know Aesthetics – Galvalume-ok? Mix and Match?
- 3-Confirm no UL 2221 (2-hr, zero clearance)
- 4-Know your clearances throughout the run Mix and Match?
- 5-Minimize Access Doors, Elbows, & Tees
- 6-Roof – single wall (no UL 2221 or clearance issue)

